

Anti- Ki67 Rabbit pAb

GB111499 -20°C

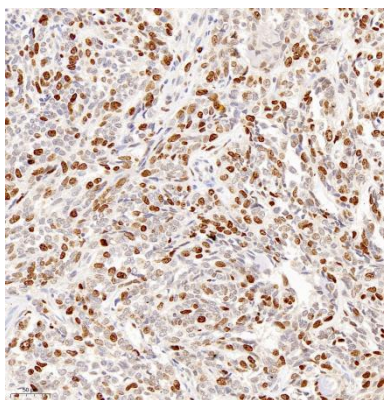
Product Information	
Protein full name	Proliferation marker protein Ki-67
Synonyms	MKI67, marker of proliferation Ki-67, KIA, MIB-1, PPP1R105
Immunogen	KLH conjugated Synthetic peptide corresponding to Human Ki67
Uniprot ID	P46013
Isotype	IgG
Purity	Affinity purification
Subcellular location	Nucleus

Applications			
IHC/IF	Human, Mouse, Rat	1: 400-1: 1000	colon cancer, esophagus, esophagus cancer

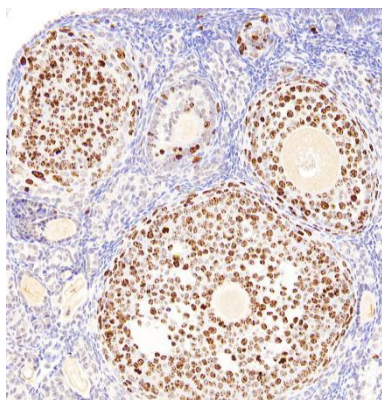
Storage	
Storage	Store at -20°C for one year. Avoid repeated freeze/thaw cycles.
Storage Buffer	PBS with 0.02% sodium azide, 100 µg/mL BSA and 50% glycerol.

Background
Required to maintain individual mitotic chromosomes dispersed in the cytoplasm following nuclear envelope disassembly . Associates with the surface of the mitotic chromosome, the perichromosomal layer, and covers a substantial fraction of the chromosome surface . Prevents chromosomes from collapsing into a single chromatin mass by forming a steric and electrostatic charge barrier: the protein has a high net electrical charge and acts as a surfactant, dispersing chromosomes and enabling independent chromosome motility .

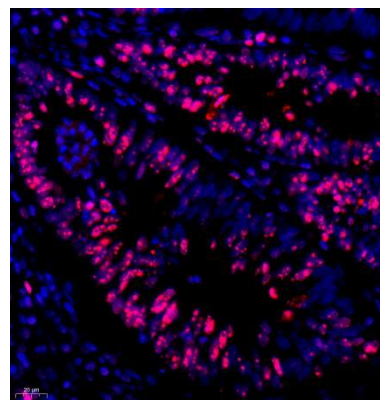
Images



Immunohistochemistry analysis of paraffin embedded human colon cancer using Ki67 (GB111499) at dilution of 1: 500



Immunohistochemistry analysis of paraffin embedded mouse ovary using ki67 (GB111499) at dilution of 1: 500



Immunofluorescence analysis of paraffin embedded human intestinal cancer using ki67 (GB111499) at dilution of 1: 800

For Research Use Only!
Ver. No.: V1.0-202202