

Anti-F4/80 Rabbit pAb

GB113373 -20°C

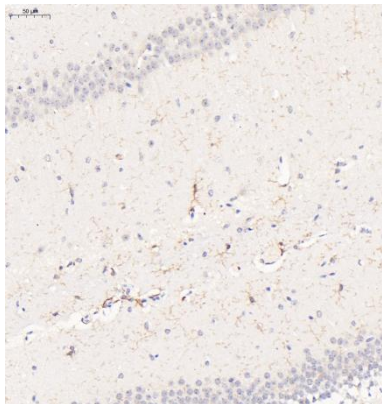
Product Information	
Protein full name	Adhesion G protein-coupled receptor E1
Synonyms	ADGRE1, TM7LN3, EMR1, Gpf480, adhesion G protein-coupled receptor E1
Immunogen	Recombinant protein corresponding to Mouse F4/80
Uniprot ID	Q61549
Isotype	IgG
Purity	Affinity purification
Subcellular location	Cell membrane

Applications			
IHC/IF	Mouse	1: 500-1: 1000	brain, lung, liver
ICC/IF	Mouse	1: 500-1: 1000	Raw264.7

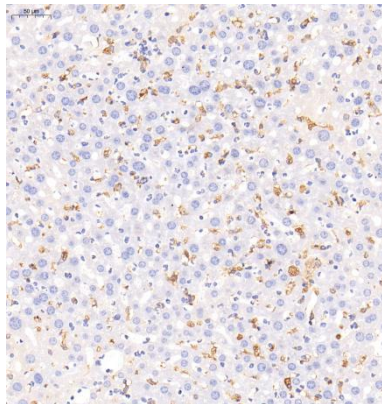
Storage	
Storage	Store at -20°C for one year. Avoid repeated freeze/thaw cycles.
Storage Buffer	PBS with 0.02% sodium azide, 100 µg/mL BSA and 50% glycerol.

Background
EGF-like module-containing mucin-like hormone receptor-like 1 also known as F4/80 is a protein encoded by the ADGRE1 gene. EMR1 is a member of the adhesion GPCR family. Adhesion GPCRs are characterized by an extended extracellular region often possessing N-terminal protein modules that is linked to a TM7 region via a domain known as the GPCR-Autoproteolysis INDucing (GAIN) domain.

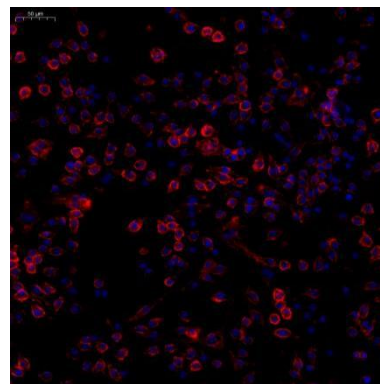
Images



Immunohistochemistry analysis of paraffin embedded mouse LPS 24h liver using F4/80 (GB113373) at dilution of 1: 500



Immunohistochemistry analysis of paraffin embedded mouse brain using F4/80 (GB113373) at dilution of 1: 1000



Immunocytochemistry analysis of paraformaldehyde-fixed Raw264.7 cell using F4/80 (GB113373) at dilution of 1: 500

For Research Use Only!
Ver. No.: V1.0-202202