

## Anti-ZO1 tight junction protein Rabbit pAb

GB115686 -20°C

Product Information	
Protein full name	Tight junction protein ZO-1
Synonyms	TJP1, ZO-1, Tight junction protein 1
Immunogen	Recombinant protein corresponding to Human Zo-1
Uniprot ID	Q07157
Isotype	IgG
Purity	Affinity purification
Predicted MW. / Observed MW.	195 kDa / 195-245 kDa

Applications			
Applications	Species	Dilution	Positive Tissue
WB	Human, Mouse, Rat	1: 500-1: 1000	MCF7, A-431, lung
IHC/IF	Mouse, Rat	1: 500-1: 1500	small intestine, kidney

Storage	
Storage	Store at -20°C for one year. Avoid repeated freeze/thaw cycles.
Storage Buffer	PBS with 0.15% ProClin300, 100 µg/mL BSA and 50% glycerol.

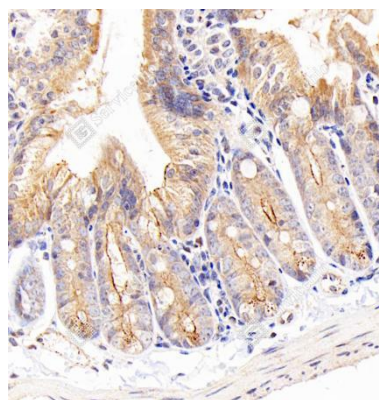
**Background**

Tjp1, Tjp2, and Tjp3 are closely related scaffolding proteins that link tight junction (TJ) transmembrane proteins such as claudins, junctional adhesion molecules, and occludin to the actin cytoskeleton. The tight junction acts to limit movement of substances through the paracellular space and as a boundary between the compositionally distinct apical and basolateral plasma membrane domains of epithelial and endothelial cells. Necessary for lumenogenesis, and particularly efficient epithelial polarization and barrier formation. Plays a role in the regulation of cell migration by targeting Cdc42bpb to the leading edge of migrating cells. Plays an important role in podosome formation and associated function, thus regulating cell adhesion and matrix remodeling. With Tjp2 and Tjp3, participates in the junctional retention and stability of the transcription factor Dbpa, but is not involved in its shuttling to the nucleus.

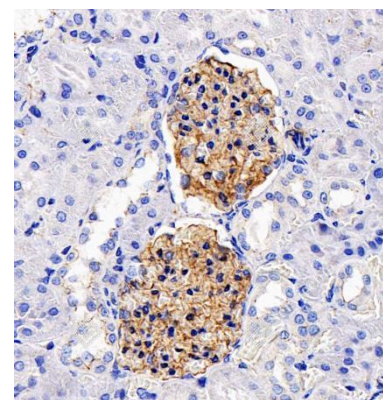
### Images



WB analysis of ZO1 tight junction protein(GB115686).  
Sample: Protein treated by RIPA Lysis Buffer (G2002).  
Blocking buffer: 3% Nonfat dry milk (GC310001) in TBST, RT, 1h.  
Primary antibody: 1: 500, 4°C overnight.  
Secondary antibody: HRP conjugated Goat Anti-Rabbit IgG (H+L) (GB23303), 1: 3000, RT, 1h.



IHC analysis of ZO1 tight junction protein(GB115686).  
Sample: Mouse small intestine, 4% PFA (G1101) 12-24h.  
Antigen retrieval: Tris-EDTA (pH 9.0) (G1218), pressure cooker 2 min.  
Primary antibody: 1: 1000, 4°C overnight.  
Secondary antibody: S-vision poly-HRP conjugated Goat Anti-Rabbit IgG(H+L), Ready to use(G1302), RT, 20min.



IHC analysis of ZO1 tight junction protein(GB115686).  
Sample: Rat kidney, 4% PFA (G1101) 12-24h.  
Antigen retrieval: Tris-EDTA (pH 9.0) (G1218), pressure cooker 2 min.  
Primary antibody: 1: 1000, 4°C overnight.  
Secondary antibody: S-vision poly-HRP conjugated Goat Anti-Rabbit IgG(H+L), Ready to use(G1302), RT, 20min.

**For Research Use Only!**  
Ver. No.: V2.0-202410