

Anti-Flag Tag Rabbit pAb

GB11938 -20°C

Product Information	
Protein full name	Flag Tag
Synonyms	DDDDK tag, DYKDDDDK, ddk, DDDDK epitope tag, ECS epitope tag, Enterokinase Cleavage Site tag, FLAG tag, FLAG
Immunogen	KLH conjugated Synthetic peptide corresponding to DYKDDDDK
Isotype	IgG
Purity	Affinity purification

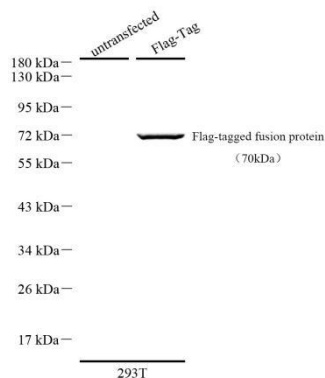
Applications			
WB	Species independent	1: 500-1: 1000	transfected 293T cells

Special note
Epitope labeling has been proved to be an effective method that can be performed on target proteins. Tag antibody can be used in a variety of applications, including ChIP, CoIP, ELISA, FC, IF, IHC, IP, WB and so on.

Storage	
Storage	Store at -20°C for one year. Avoid repeated freeze/thaw cycles.
Storage Buffer	PBS with 0.02% sodium azide, 100 µg/mL BSA and 50% glycerol.

Background
The DYKDDDDK(FLAG) peptide has been used extensively as a general tag in expression vectors. This peptide can be expressed and detected with the protein of interest as an amino-terminal or carboxy-terminal fusion. The DDDDK peptide is likely to be located on the surface of a fusion protein because of its hydrophilic nature. As a result, the DDDDK peptide is more likely to be accessible to antibodies. A DDDDK-tag can be used in many different assays that require recognition by an antibody, such as western blotting, immunocytochemistry, immunoprecipitation, flow cytometry, protein purification, and in the study of protein-protein interactions, cell ultrastructure, and protein localization and so on.

Images



Western blot analysis of Flag-Tag (GB11938) at dilution of 1: 500

For Research Use Only!
Ver. No.: V1.0-202409