

# Anti-Ki67 Mouse mAb

GB121141 -20°C

Product Information	
Protein full name	Proliferation marker protein Ki-67
Synonyms	MKI67, marker of proliferation Ki-67, KIA,MIB-1, PPP1R105
Immunogen	KLH conjugated Synthetic peptidecorresponding to Human Ki67
Uniprot ID	P46013
Isotype	IgG1, κ
Purity	Affinity purification
Subcellular location	Nucleus

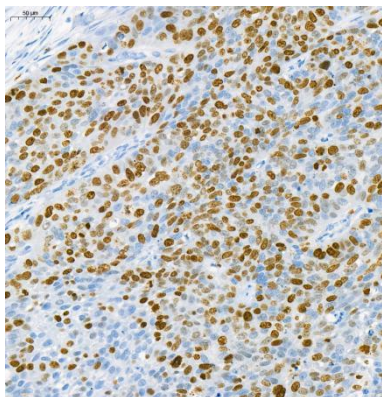
Applications			
IHC/IF	Human, Mouse, Rat	1: 300-1: 600	esophageal cancer, ovarian cancer, spleen
ICC/IF	Human, Mouse, Rat	1: 100-1: 500	HeLa

Storage	
Storage	Store at -20°C for one year. Avoid repeated freeze/thaw cycles.
Storage Buffer	PBS with 0.02% sodium azide, 100 µg/mL BSA and 50% glycerol.

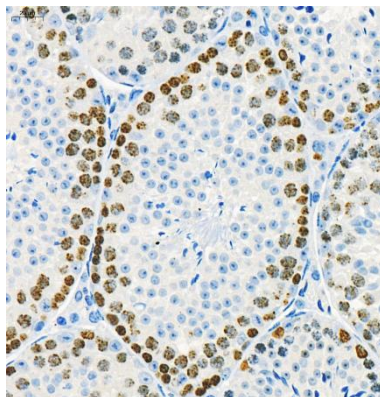
**Background**

equired to maintain individual mitotic chromosomes dispersed in the cytoplasm following nuclear envelope disassembly . Associates with the surface of the mitotic chromosome, the perichromosomal layer and covers a substantial fraction of the chromosome surface . Prevents chromosomes from collapsing into a single chromatin mass by forming a steric and electrostatic charge barrier: the protein has a high net electrical charge and acts as a surfactant, dispersing chromosomes and enabling independent chromosome motility .

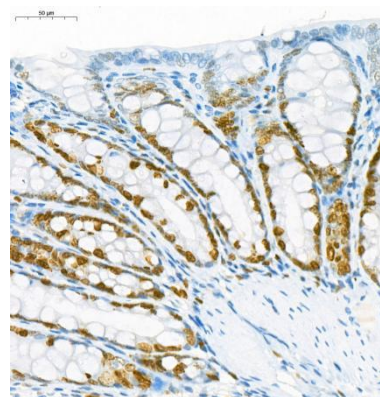
## Images



Immunohistochemistry analysis of paraffin embedded human esophageal carcinoma using Ki67 (GB121141) at dilution of 1: 300



Immunohistochemistry analysis of paraffin embedded mouse testis using Ki67 (GB121141) at dilution of 1: 300



Immunohistochemistry analysis of paraffin embedded rat colon using Ki67 (GB121141) at dilution of 1: 300

**For Research Use Only!**  
Ver. No.: V1.0-202202