

Anti-Bcl-2 Mouse mAb

GB124830 -20°C

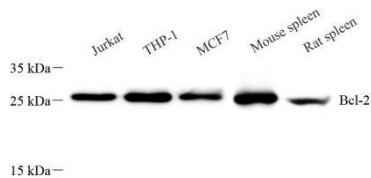
Product Information	
Protein full name	Apoptosis regulator Bcl-2
Synonyms	BCL2, Bcl-2, PPP1R50, B-cell CLL/lymphoma 2, apoptosis regulator
Immunogen	Recombinant protein corresponding to Human Bcl-2
Uniprot ID	P10415
Isotype	IgG1, κ
Purity	Affinity purification
Predicted MW. / Observed MW.	26 kDa / 26kDa

Applications			
WB	Human, Mouse, Rat	1: 500-1: 1000	spleen

Storage	
Storage	Store at -20°C for one year. Avoid repeated freeze/thaw cycles.
Storage Buffer	PBS with 0.02% sodium azide, 100 µg/mL BSA and 50% glycerol.

Background
Suppresses apoptosis in a variety of cell systems including factor-dependent lymphohematopoietic and neural cells . Regulates cell death by controlling the mitochondrial membrane permeability . Appears to function in a feedback loop system with caspases . Inhibits caspase activity either by preventing the release of cytochrome c from the mitochondria and/or by binding to the apoptosis-activating factor (APAF-1) . Also acts as an inhibitor of autophagy: interacts with BECN1 and AMBRA1 during non-starvation conditions and inhibits their autophagy function . May attenuate inflammation by impairing NLRP1-inflammasome activation, hence CASP1 activation and IL1B release .

Images



Western blot analysis of Bcl-2 (GB124830) at dilution of 1:1000

For Research Use Only!
Ver. No.: V1.0-202202