

# Anti-HA Tag Mouse mAb

GB12939 -20°C

Product Information	
Protein full name	HA Tag
Synonyms	HA epitope tag, HA1, HA2, hemagglutinin, Hemagglutinin HA1 chain, Hemagglutinin HA2 chain
Immunogen	KLH conjugated Synthetic peptide corresponding to YPYDVPDYA
Isotype	IgG1, κ
Purity	Affinity purification

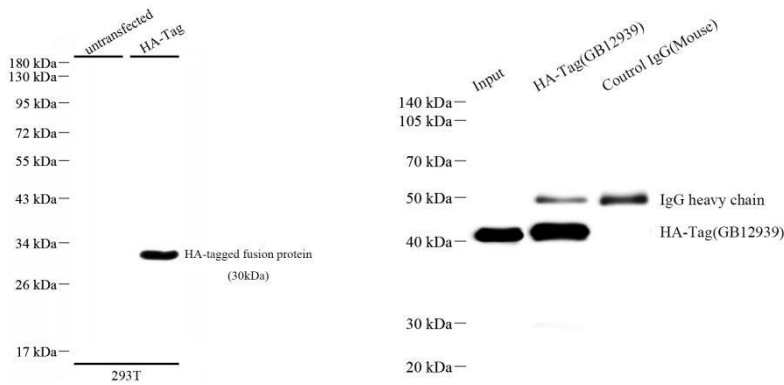
Applications			
WB	Species independent	1: 500-1: 1000	HA-tag fusion protein
IP	Species independent	1: 50-1: 200	transfected HEK-293F cells

Special note
Epitope labeling has been proved to be an effective method that can be performed on target proteins. Tag antibody can be used in a variety of applications, including ChIP, CoIP, ELISA, FC, IF, IHC, IP, WB and so on.

Storage	
Storage	Store at -20°C for one year. Avoid repeated freeze/thaw cycles.
Storage Buffer	PBS with 0.02% sodium azide, 100 µg/mL BSA and 50% glycerol.

Background
Protein tags are protein or peptide sequences located either on the C- or N- terminal of the target protein, which facilitates one or several of the following characteristics: solubility, detection, purification, localization and expression. The HA tag is corresponds to amino acid residues YPYDVPDYA of human influenza virus hemagglutinin(HA). Many recombinant proteins have been engineered to express the HA tag, which does not appear to interfere with the bioactivity or the biodistribution of the recombinant protein. This tag facilitates the detection, isolation, and purification of the proteins. The HA tag is useful in western blotting and immunohistochemical localization of expressed fusion proteins when examined with antibodies raised specifically against the HA-tag.

## Images



Western blot analysis of HA-Tag (GB12939) at dilution of 1: 1000

Immunoprecipitation of transfected HEK-293F cells lysate using HA-Tag (IP: GB12939, 1: 100; Detection: GB12939, 1: 3000)

For Research Use Only!  
Ver. No.: V1.0-202407