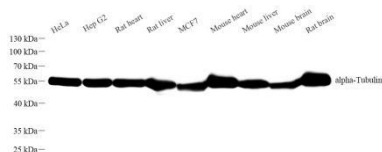


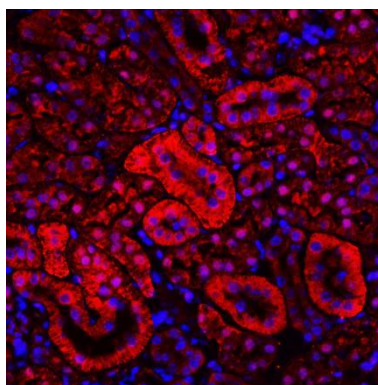
Recombinant Anti- α Tubulin antibody (Rabbit mAb)

GB15201 -20°C

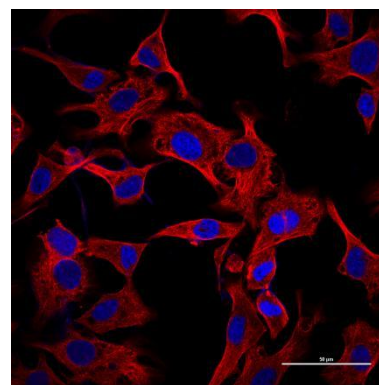
Product Information			
Protein full name	Tubulin alpha-1A chain		
Synonyms	TUBA1A, B-ALPHA-1, LIS3, TUBA3, tubulin alpha 1a,TUBA1B, K-ALPHA-1, tubulin alpha 1b		
Uniprot ID	P68369		
Isotype	IgG		
Purity	Affinity purification		
Subcellular location	Cytoskeleton		
Predicted MW. / Observed MW.	50 kDa / 55 kDa		
Applications			
WB	Human, Mouse, Rat	1: 2000-1: 4000	heart, liver, brain
IHC/IF	Human, Mouse, Rat	1: 2000-1: 4000	kidney
ICC/IF	Human, Mouse, Rat	1: 2000-1: 4000	HeLa
Storage			
Storage	Store at -20°C for one year. Avoid repeated freeze/thaw cycles.		
Storage Buffer	PBS with 0.15% ProClin300, 100 μg/mL BSA and 50% glycerol.		
Background			
Microtubules of the eukaryotic cytoskeleton perform essential and diverse functions and are composed of a heterodimer of alpha and beta tubulins. The genes encoding these microtubule constituents belong to the tubulin superfamily, which is composed of six distinct families. Genes from the alpha, beta and gamma tubulin families are found in all eukaryotes. The alpha and beta tubulins represent the major components of microtubules, while gamma tubulin plays a critical role in the nucleation of microtubule assembly.			
Images			



Western blot analysis of α -Tubulin (GB15201) at dilution of 1: 2000



Immunofluorescence analysis of paraffin embedded mouse kidney using α -Tubulin (GB15201) at dilution of 1: 1000



Immunocytochemistry analysis of 4% paraformaldehyde-fixed HeLa cells using α -Tubulin (GB15201) at dilution of 1: 1000

For Research Use Only!
Ver. No.: V1.0-202407