

## Gene Name

HSP90AB1, heat shock protein 90 alpha family class B member 1

## Synonyms

HSP84; HSPC2; HSPCB; D6S182; HSP90B

## Host

Rabbit

## Reactivity

Human, Mouse, Rat, Monkey

## Clonality

Polyclonal

## Application

WB (1:500 - 1:1000),  
IHC (1:50 - 1:100),  
IF/IC (1:50 - 1:200)

## Gene ID

3326, 15516, 301252

## SwissProt

P08238, P11499, P34058

## Concentration

1 mg/ml

## Immunogen

KLH-conjugated synthetic phosphopeptide corresponding to residues surrounding S254 of human HSP90 beta protein. The exact sequence is proprietary.

## Purification

The antibody was purified by immunogen affinity chromatography.

## Buffer

Liquid in 0.42% Potassium phosphate, 0.87% Sodium chloride, pH 7.3, 30% glycerol, and 0.01% sodium azide.

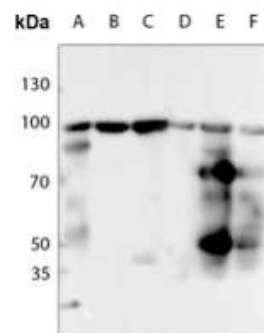
## Storage

Store at -20°C for 12 months. Avoid repeated freeze / thaw cycles.

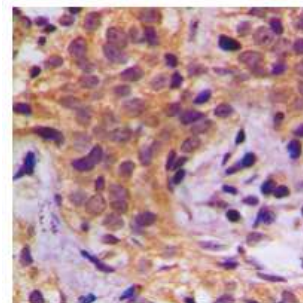
**FOR RESEARCH USE ONLY**

## LifeSab™ HSP90 beta (pS254) Rabbit pAb

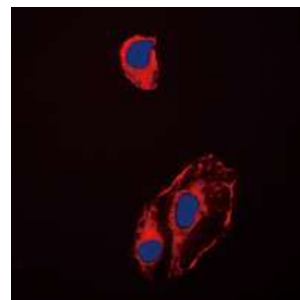
Cat. #: AD8102 Size: 50 µl/100 µl



Western blot analysis of HSP90 beta (Phospho-S254) expression in HEK293T (A), HeLa (B), U2OS (C), mouse testis (D), rat lung (E), rat testis (F) whole cell lysates. (Predicted band size: 83 kD; Observed band size: 90 kD)



Immunohistochemical analysis of HSP90 beta (Phospho-S254) staining in human breast cancer formalin fixed paraffin embedded tissue section. The section was pre-treated using heat mediated antigen retrieval with sodium citrate buffer (pH 6.0). The section was then incubated with the antibody at room temperature and detected using an HRP conjugated compact polymer system. DAB was used as the chromogen. The section was then counterstained with haematoxylin and mounted with DPX.



Immunofluorescent analysis of HSP90 beta (Phospho-S254) staining in HeLa cells. Formalin-fixed cells were permeabilized with 0.1% Triton X-100 in TBS for 5-10 minutes and blocked with 3% BSA-PBS for 30 minutes at room temperature. Cells were probed with the primary antibody in 3% BSA-PBS and incubated overnight at 4°C in a humidified chamber. Cells were washed with PBST and incubated with a DyLight 594-conjugated secondary antibody (red) in PBS at room temperature in the dark. DAPI was used to stain the cell nuclei (blue).